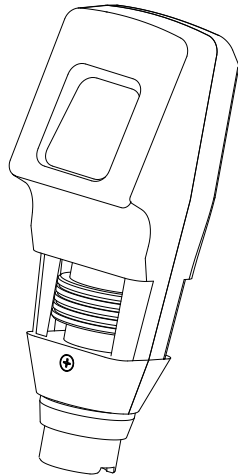


3.5V Retinoscope User's Guide



Thank you for purchasing the 3.5V Retinoscope. To prevent damage to the 3.5V Retinoscope or injury to yourself or to others, read the following safety precaution in their entirety before using this equipment. Keep these safety instructions where all those who use the device will read them.

Symbol:



Attention: Read user's guide for Warning and Cautions and Instructions for operation.

Warnings and Cautions



Warning: This device must not be used in the presence of flammable gases.



Warning: This device should not be immersed in fluids.



Warning: Use 3.5 V Retinoscope only with all approved 3.5 V power supplied.



Warning: Federal law restricts this device to sale or order of a physician.

1. Part list

Show as Fig.1

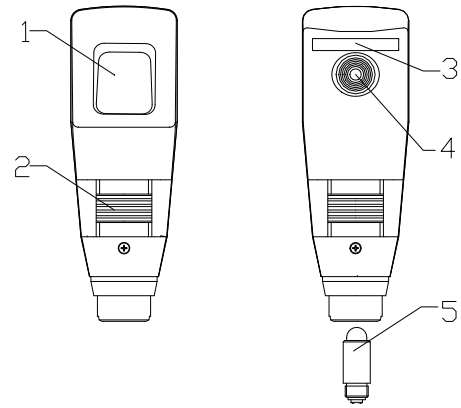


Fig. 1

1. Dust glass;
2. Focusing knob;
3. Rubber brow rest;
4. Peep hole;
5. Bulb.

2. Operating Instructions

1. Connect the 3.5 V Retinoscope to the power .
2. Control ring allows for easy adjustment and continuous 360°rotation. Maintains the same plane of focus during rotation.
3. 100% dustproof housings and glass cover on the front keep the device cleaner longer.

3. Maintenance

3.1 Replacing the Illumination bulb

Turn off the main power switch, remove the 3.5 V Retinoscope from the power . grasp end of bulb and pull out (use nail file or similar object if needed). Insert replacement bulb, Push bulb in firmly. Show as Fig.2.

The specification of bulb for the 3.5 V Retinoscope is 3.5 V/2.7 W

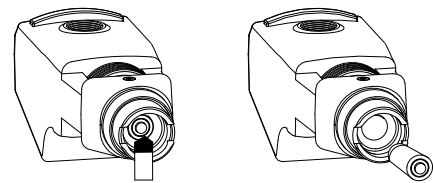


Fig.2

3.2 Cleaning

The cleaning of the 3.5 V Retinoscope is easily accomplished by wiping the external surface with a cloth dampened with a mild detergent and water solution, or a 70% isopropyl alcohol, or a 10% bleach solution (by volume). Do not immerse.

NOTE: Solution entering the assembly could damage internal components. Use caution to ensure cloth is not saturated with solution.



Caution: The 3.5 V Retinoscope should never be placed in municipal waste.

4. Technical Specifications

Optical Specifications		
Rotation		$\geq 190^\circ$
Distance from the device to which the real image ^a of the lamp filament is adjustable		≤ 450 mm
Distance from the device to which the virtual image ^a of the lamp filament is adjustable		≤ 450 mm
Length of streak image ^b		≥ 30 mm
Width of streak image ^b		≤ 1.5 mm
Deviation from linearity of the streak image at the focus ^b .		≤ 2 mm
Rotation decentring of centre of streak image ^b .		≤ 10 mm
a All distances are measured from the light exit of the device b When focus at 500 mm		
Electrical Specifications		
bulb		3.5 V 2.7 W
Operation mode		Intermittent, on-time should not exceed 2 min with off-time not less than 5 min
Environment Requirements		
Operation	Environment Temperature	+10 °C – +35 °C
	Relative Humidity	30% – 75%
	Atmospheric Pressure	700 hPa – 1060 hPa
Shipping	Common Conveyance	
Storage	Environment Temperature	-40 °C – +55 °C
	Relative Humidity	10% – 90%
	Atmospheric Pressure	500 hPa – 1060 hPa

41892.000.00. NI